



ohic & ethni
Artisan itinérant

Devient
Becomes

ROSEPΛRO BIJOUX

ROSEPΛRO BIJOUX

CATALOGUE 2015

Origin

Roseparo's handmade artisanal jewellery was borne from a fascination with journeys, the people we meet along the way and the beauty that can be found in the simplicity of nomadic life.

The exquisite "Spirit of Tibet" collection was inspired by traditional Tibetan jewellery, with mandala designs inspired by the rosaries of Tibetan monks.

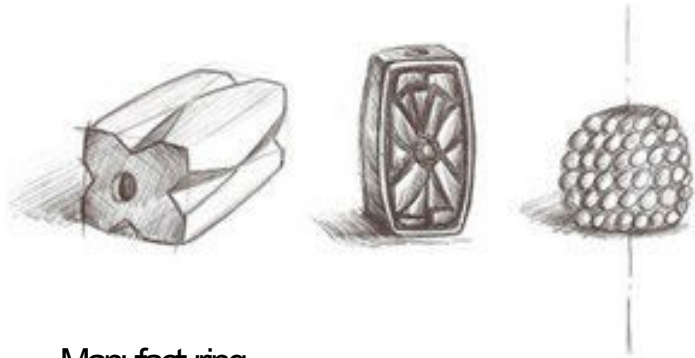
The Roseparo beads are designed and produced in the foothills of Alps in a small atelier, with all jewellery made to order and handmade by us in our workshops.



Methods

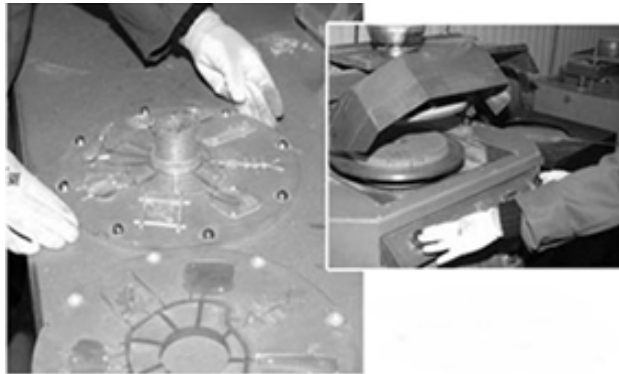
Creation

Our original Roseparo jewels are entirely crafted by hand in our workshop. To preserve their artisanal identity, our pearls are made to order in smaller volumes.



Manufacturing

All our pearls are manufactured in Lyon under constant and strict quality control.



Workshop

All our products are hand crafted in our workshop with the utmost care.



The Spirit of Tibet Collection

Sage



The Spirit of Tibet Collection

Sage Silver Bracelet

Beads are assembled on Jae strings (braided Nylon). The size of the bracelet is adjustable thanks to a sliding link.

Finishing
Plated silver 925

Size
Minimum wrist size: 17cm
Maximum wrist size: 24cm

(The clasp is a sliding knot, it allows to adjust the bracelet to all wrist sizes.)

String Color
Black



Ref : BSA01



Ref : BSA02



Ref : BSA03

The Spirit of Tibet Collection

Sage Silver Necklace

Beads are assembled nylon strings (enlaced Jade). Can be worn as a choker or a necklace.

Finishing

Plated silver 925

Size

Minimum neck size: 41cm
Maximum neck size: 72cm

(The clasp is a sliding knot, it allows to adjust the necklace to all neck sizes.)

String Color

Black



Ref : CSA01



Ref : CSA02

The Spirit of Tibet Collection

Sage Gold Bracelet

Pearls are assembled on Jae strings (braided Nylon). The size of the bracelet is adjustable thanks to a sliding link.

Finishing
Plated gold,
24 carats

Size
Minimum wrist size: 17cm
Maximum wrist size: 24cm

(The clasp is a sliding knot, it allows to adjust the bracelet to all wrist sizes.)

String Color
Black



Ref : BSO 01



Ref : BSO 02



Ref : BSO 03

The Spirit of Tibet Collection

Sage Gold Necklace

Beads are assembled nylon strings (enlaced Jade). Can be worn as a choker or a necklace.

Finishing
Plated gold
24 carats

Size
Minimum neck size: 41cm
Maximum neck size: 72cm

(The clasp is a sliding knot, it allows to adjust the necklace to all neck sizes.)

String Color
Black



Ref : CSO 01



Ref : CSO 02

The Spirit of Tibet Collection

Essentiel



The Spirit of Tibet Collection

Essentiel silver Bracelet

Pearls are assembled on Jae strings (braided Nylon). The size of the bracelet is adjustable thanks to a sliding link.

Finishing
Plated silver 925

Size
Minimum wrist size: 17cm
Maximum wrist size: 24cm

(The clasp is a sliding knot, it allows to adjust the bracelet to all neck sizes.)

String Color
Black



Ref : BEA01



Ref : BEA02



Ref : BEA03



Ref : BEA04



Ref : BEA05



Ref : BEA06

The Spirit of Tibet Collection

Essentiel Silver Bracelet

Pearls are assembled on Jae strings (braided Nylon). The size of the bracelet is adjustable thanks to a sliding link.

Finishing

Plated silver 925

Size

Minimum wrist size:

17cm

Maximum wrist size:

24cm

(The clasp is a sliding knot, it allows to adjust the bracelet to all neck sizes.)

String Color

Black



Ref : BEA13



Ref : BEA08



Ref : BEA09



Ref : BEA10



Ref : BEA11



Ref : BEA12

The Spirit of Tibet Collection

Essentiel Silver Necklace

Beads are assembled nylon strings (enlaced Jade). Can be worn as a choker or a necklace.

Finishing

Plated silver 925

Size

Minimum neck size:

38cm

Maximum neck size:

52cm

(The clasp is a sliding knot, it allows to adjust the necklace to all neck sizes.)

String Color

Black



Ref : CEA13



Ref : CEA02



Ref : CEA03

The Spirit of Tibet Collection

Essentiel Gold Bracelet

Pearls are assembled on Jae strings (braided Nylon). The size of the bracelet is adjustable thanks to a sliding link.

Finishing
Plated gold,
24 carats

Size
Minimum wrist size: 14cm
Maximum wrist size: 19cm

(The clasp is a sliding knot, it allows to adjust the bracelet to all wrist sizes.)

String Color
Black



Ref : BEO 01



Ref : BEO 02



Ref : BEO 03



Ref : BEO 10



Ref : BEO 04



Ref : BEO 13

The Spirit of Tibet Collection

Essentiel Gold Bracelet

Pearls are assembled on Jae strings (braided Nylon). The size of the bracelet is adjustable thanks to a sliding link.

Finishing
Plated gold,
24 carats

Size
Minimum wrist size: 14cm
Maximum wrist size: 19cm

(The clasp is a sliding knot, it allows to adjust the bracelet to all wrist sizes.)

String Color
Black



Ref : BEO 11



Ref : BEO 08



Ref : BEO 09



Ref : BEO 06

The Spirit of Tibet Collection

Color



The Spirit of Tibet Collection

Color Silver Bracelet

Tassels and beads are assembled on Nylon strings (enlaced Jade). The size of the bracelet is adjustable thanks to a sliding link.

Finishing

Plated silver 925

Tassels are hand made from silk strings

Size

Minimum wrist size: 17cm

Maximum wrist size: 22cm

(The clasp is a sliding knot, it allows to adjust the bracelet to all neck sizes.)

String Color

Black

Burgundy

Turquoise

Grey

Purple



Ref : BCABT



Ref : BCAV



Ref : BCAB



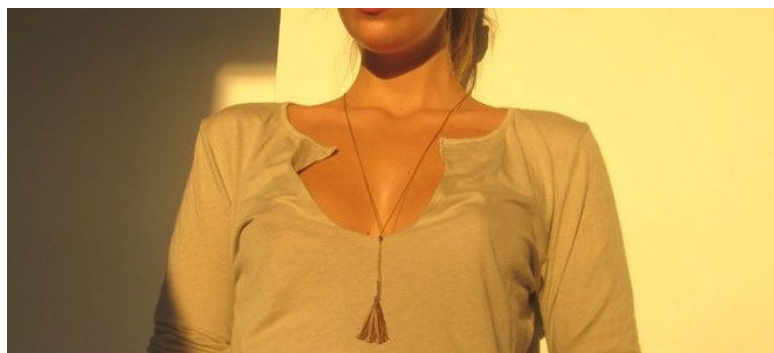
Ref : BCAG



Ref : BCAN

The Spirit of Tibet Collection

Lika



The Spirit of Tibet Collection

Lika Necklace

Beads are assembled nylon strings (enlaced Jade). Can be worn as a choker or a necklace.

Finishing

Plated silver 925

Tassels are hand made from silk strings

Size

Minimum neck size: 17cm

Maximum neck size: 24cm

(The clasp is a sliding knot, it allows to adjust the necklace to all neck sizes.)

String Color

Black
Grey
Yellow
Pink
Green
Purple



Ref : CLA
BO1



Ref : CLA
GO1



Ref : CLA
JO1



Ref : CLA
RO1



Ref : CLA
VO1



Ref : CLA
VIO1

The Spirit of Tibet Collection

Chance



The Spirit of Tibet Collection

Chance Bracelet

Tassels and beads are assembled on Nylon strings (enlaced Jade). The size of the bracelet is adjustable thanks to a sliding link.

Finishing

Plated silver 925

Tassels are hand made from silk strings

Size

Minimum wrist size: 10cm

Maximum wrist size: 16cm

(The clasp is a sliding knot, it allows to adjust the bracelet to all neck sizes.)

String Color

Blue

Grey

Brown

Green

Red

Black



Ref : BCA
BO1



Ref : BCA
GO1



Ref : BCA
MO1



Ref : BCA
VO1



Ref : BCA
RO1



Ref : BCA
NO1

Packaging and Display

A printed Roseparo cotton pouch is provided with the following bracelets and necklaces:

Essentiel
Sage
Chance
Lika

A printed Roseparo cardboard pouch is provided with every color every bracelet.

In addition, postcards are included with every order.

Oak displays are also available for orders greater than 2000 euros.

